

ALL-MAKES PARTS AND SERVICE

EXPECT MORE SAVINGS – NOVEMBER THROUGH DECEMBER

SAVE ON OUR RIG TOUGH BATTERY

Commercial vehicles require nothing less than the most powerful, reliable and durable batteries. The Rig Tough® heavy-duty Group 31 Battery offers excellent starting power and reserve capacity, resulting in higher performance.

GROUP 31 BATTERY

PN: C31-950STA

- 950 CCA
- 180 RC
- 12-Month warranty

\$84⁹⁹ with Core Return



MATTRESSES

7" Foam with Grey Pinstripe Cover

PN: RTMAT38807

- 38" x 80" x 7"
- X-Ref: MF388065P, FLT36807F, TK3880

\$125⁰⁰

PN: RTMAT42807

- 42" x 80" x 7"
- X-Ref: MF428065P, 2513885C1, TK4280

\$145⁰⁰



RIG TOUGH MUDFLAPS

PN: GT-2424CD

- 24" x 24", Black rubber, chevron
- 1/4" Thickness
- X-Ref: KR062424F100, PAC24X24-4

\$12⁹⁹

PN: GT-2436CD

- 24" x 36", Black rubber, chevron
- 1/4" Thickness
- X-Ref: KR062436F100, PAC24X36-4

\$14⁵⁰

PN: GT-2430CD

- 24" x 30", Black rubber, chevron
- 1/4" Thickness
- X-Ref: KR062430F100, PAC24X30-4

\$13⁹⁹



QUARTER FENDERS AND POST

PN: 6100101001

- 25" x 22" SS full brace, pair
- X-Ref: QT00101, 1585FB-KIT

\$245⁰⁰ per Pair

PN: 6103002

- 5/8" SGL post
- X-Ref: FB00655, 032-00199

\$13²⁰

PN: GMX1900RT

- 25" x 24" Poly braceless extreme weather, pair
- X-Ref: QT00213, 031-01636, 1900-KIT, FLT 1900 KIT, KNG 1900KIT, 9817-03100924

\$68⁰⁰ per Pair

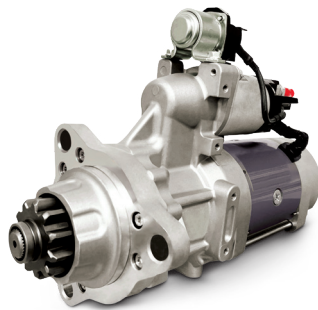
SPECIAL PRICING ON RIG TOUGH BRAKE CALIPERS

All Rig Tough® brake caliper components are of the highest quality, and every unit is pressure tested with the same machines and parameters that are used at OEM factories.



AIR DISC BRAKE CALIPERS

PN	DESCRIPTION	APPLICATION	PRICE
RT98B90032	Caliper, RH without Carrier	Fits Bendix® ADB22X®	\$499.00
RT99B90032-1	Caliper, RH	Fits Bendix® ADB22X®	\$575.00
RT98B90033	Caliper, LH without Carrier	Fits Bendix® ADB22X®	\$499.00
RT99B90033-1	Caliper, LH	Fits Bendix® ADB22X®	\$575.00



STARTERS

- Rated for 60,000 cycles vs. 39MT at 30,000 cycles
- Optimized pinion speed
- Over crank protection
- 4-Year, unlimited mile warranty

PN: 61014400

150MT Starter Motor, 12v

- Delco X-Ref: 8200308
- X-Ref: IN1478, FL0579, FL0777, FL0975, PC1479

PN: 61015900

150MT Starter Motor, 12v

- Delco X-Ref: 61008898
- X-Ref: FLA579, M11061

PN: 61017311

150MT Starter Motor, 12v

- Delco X-Ref: 8200433
- X-Ref: IN1378, IN3179, PC1379, PC2679, PC7267

PN: 61015901

150MT Starter Motor, 24v

- Delco X-Ref: 8200330
- X-Ref: PC83579, PV2479

\$499⁹⁹ Each



CONTROLLERS

Control Panel Assembly, HVAC

PN: 938-1508

- International application
- X-Ref: 3827580C2

\$399⁹⁹

PN: 938-1547

- Peterbilt application
- X-Ref: Q21-6119

\$419⁹⁹

GREAT DEALS ON NORMA GROUP CLAMPS



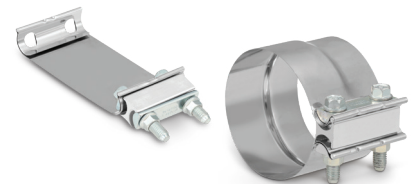
TORQUE CLAMPS

PN	PRODUCT	DESCRIPTION	PRICE
CT300LSS	Constant-Torque® Heavy-Duty Stainless Steel Clamp	2-1/4" to 3-1/8"	\$ 9.89
CT350LSS	Constant-Torque® Heavy-Duty Stainless Steel Clamp	2-3/4" to 3-5/8"	\$10.08
CT400LSS	Constant-Torque® Heavy-Duty Stainless Steel Clamp	3-1/4" to 4-1/8"	\$10.24
CT450LSS	Constant-Torque® Heavy-Duty Stainless Steel Clamp	3-3/4" to 4-5/8"	\$10.65
CT650LSS	Constant-Torque® Heavy-Duty Stainless Steel Clamp	5-3/4" to 6-5/8"	\$11.10
CT9444	Constant-Torque® Stainless Aero-Seal Clamp	2-5/16" to 3-1/4"	\$10.42



EXHAUST CLAMPS

PN	PRODUCT	DESCRIPTION	PRICE
E40ST	Flat Band Clamp	304 Stainless Steel, 4"	\$12.48
E50ST	Flat Band Clamp	305 Stainless Steel, 5"	\$12.86
L40AA	Preformed Clamp	Aluminized, 4"	\$11.49
L40SA	Preformed Clamp	304 Stainless Steel, 4"	\$12.35
L50AA	Preformed Clamp	Aluminized, 5"	\$11.71
L50SA	Preformed Clamp	304 Stainless Steel, 5"	\$13.59



HOSE CLAMPS

PN	PRODUCT	DESCRIPTION	PRICE
62010H	Breeze Power-Seal® Standard Clamp	9/16" to 1-1/16"	\$0.83
62012H	Breeze Power-Seal® Standard Clamp	11/16" to 1-1/4"	\$0.95
62024H	Breeze Power-Seal® Standard Clamp	1-1/16" to 2"	\$1.21
62036H	Breeze Power-Seal® Standard Clamp	1-13/16" to 2-3/4"	\$1.46
9206H	Breeze Liner Silicone Hose Clamp	7/16" to 25/32"	\$2.87
9208H	Breeze Liner Silicone Hose Clamp	1/2" to 29/32"	\$2.94
9212H	Breeze Liner Silicone Hose Clamp	11/16" to 1-1/4"	\$2.95
9224H	Breeze Power-Seal® Stainless Silicone Hose Clamp	1-1/16" to 2"	\$3.14



V-BAND CLAMPS FOR EMISSION SYSTEMS

PN	PRODUCT	DESCRIPTION	PRICE
RCL2871863	V-Band Clamp, Cummins DPF	X-Ref: 2871863	\$68.90
RCL2880213	V-Band Clamp, Cummins 6.3	X-Ref: 2880213	\$50.63
RCL3519061	V-Band Clamp	X-Ref: 3519061C1	\$17.95
RCL3557856	V-Band Clamp, Spring-Loaded T-Bolt	X-Ref: 3557856C1	\$31.49
RCL3683144	V-Band Clamp	X-Ref: 3683144	\$48.25
RCL5304849	V-Band Clamp	X-Ref: 5304849	\$57.76
RCL900012	V-Band Clamp, 4"	X-Ref: 90-0012	\$12.29
RCL900013	V-Band Clamp, 5"	X-Ref: 90-0013	\$12.31



SELECT SEATS AT A GREAT PRICE



SEATS



PN	DESCRIPTION	APPLICATION	PRICE
S188900FW631	Legacy® SILVER, High-Back, 22" Cushion and Back, Full Recline, Air Lumbar, Isolator, Black	International	\$740.00
S188900MW61	Legacy® SILVER, High-Back, 22" Cushion and Back, Full Recline, Air Lumbar, Isolator, Black	International	\$780.00
S189800FA631	Heritage® SILVER, High-Back, 20" Cushion, 15° Recline, Adjustable Lumbar, Black	International	\$600.00
S189800FA635	Heritage® SILVER, High-Back, 20" Cushion, 15° Recline, Adjustable Lumbar, Grey	International	\$600.00
189800FA631	Heritage® SILVER, High-Back, 20" Cushion, 15° Recline, Adjustable Lumbar, Black	Peterbilt	\$560.00
189801FA631	Heritage® SILVER, High-Back, 20" Cushion, 15° Recline, Adjustable Lumbar, Grey	Peterbilt	\$510.00
188900MW61	Legacy® SILVER, High-Back, 22" Cushion and Back, Full Recline, Air Lumbar, Isolator, Black	Peterbilt	\$799.00
188900MW65	Legacy® SILVER, High-Back, 22" Cushion and Back, Full Recline, Air Lumbar, Isolator, Grey	Peterbilt	\$799.00

BIG SAVINGS ON RAIN-X LONGITUDE WIPER BLADES

Rain-X® Longitude™ Professional wiper blades are available in nine sizes. The revolutionary Rain-X Longitude premium wiper blade contours to the curvature of your windshield to provide even wiping pressure along the full length of the blade. The rubber blades are more resistant to cracking, easy to install and provide all-weather performance.



PN	DESCRIPTION	TRICO X-REF	ANCO X-REF	PRICE
830315	15" Rubber Wiper Blades	31-15	91-15	\$22.79
830316	16" Rubber Wiper Blades	31-16	91-16	\$22.79
830318	18" Rubber Wiper Blades	31-18	91-18	\$22.79
830320	20" Rubber Wiper Blades	31-20	91-20	\$22.79
830321	21" Rubber Wiper Blades	31-21	91-21	\$24.49
830322	22" Rubber Wiper Blades	31-22	91-22	\$24.49
830324	24" Rubber Wiper Blades	31-24	91-24	\$24.49
830326	26" Rubber Wiper Blades	31-26	91-26	\$24.49
830328	28" Rubber Wiper Blades	31-28	91-28	\$25.49



JUST WHAT YOU EXPECT FROM RUSH TRUCK CENTERS, MORE.

- ONLINE PARTS ORDERING
- ALL MAKES AND MODELS
- PRODUCT EXPERTISE



SHOP PARTS

© 2025 Rush Enterprises, Inc. 3734-0625 RTC Shop Parts/e-Commerce Mailer Ad - November/December 2025



SERVICE SPECIALS TO HELP YOU PREPARE FOR WINTER



Battery – Remove and Replace (one)

\$64⁹⁹

Labor Code: 000BATT

Battery – Remove and Replace (each additional)

\$24⁹⁹

Labor Code: 00BATT2

Starting and Charging System Inspection

\$129⁹⁹

- Visually inspect the condition of batteries, looking for leaks and corrosion.
- Examine the condition of the battery connections and clean until free of all corrosion.
- Inspect condition and tightness of battery cables and cable ends.
- Inspect condition and tightness of ground strap from battery to engine, frame and body.
- Test battery percentage of charge and load test.
- Inspect starter amperage draw and listen for any unusual noises.
- Inspect alternator ground, wire connections, mounting and belts.
- Inspect alternator amperage and voltage output.

Note: Parts and labor required for any necessary repairs are at an additional charge upon your approval.
Labor Code: 00START

Offers valid November 1 – December 31, 2025 at Rush Truck Centers service locations. Labor Only. Cannot be combined with any other offers. Prices subject to change without notice.